

New F23 Items Only



NEW

3 WAY 18

This briefcase lives at the intersection of your commuting needs, doubling as a shoulder bag, transforming into a backpack, and doing it all with environmentally conscious organizational wizardry.



KEY FEATURES:

- 1 Front Rip Zip pocket with magnetic buckle, mesh zippered pocket, and stretch fabric detail pockets
- 2 Expandable zipper design creates five more liters of space
- 3 Main compartment has stretch woven detail pockets backed with soft material for headphones
 - Additional divider in the main compartment with a zippered pocket and stretch detail pockets
 - Body panel pocket has padded laptop sleeve (fits laptops up to a 15"), and a dump pouch with detail pockets
 - Luggage handle slot on the body panel
 - Sustainably made with recycled materials



Black Sagebrush Shadow



Tiger's Eye Wildfire Black

SPECS:

Weight: 1.27 kg (2.74 lbs)
Vol: 2.7 L (1100 cu-in)
Size: One Size

NEW

3 WAY 27

It's a briefcase! It's a shoulder bag! It's a backpack! It's...all three? Yep, the 3 Way 27 is bigger, roomier, and more environmentally friendly than ever.



KEY FEATURES:

- 1 Front Rip Zip pocket with magnetic buckle, mesh zippered pocket, and stretch fabric detail pockets
- 2 Clam shell opening to the main compartment for easy access and an elastic retention band
- 3 Main compartment has stretch woven detail pockets backed with soft material for headphones
 - Body panel pocket has padded laptop sleeve (fits laptops up to a 17"), and a dump pouch with detail pockets
 - Luggage handle slot on the body panel
 - Sustainably made with recycled materials



Black Sagebrush



Shadow Tiger's Eye

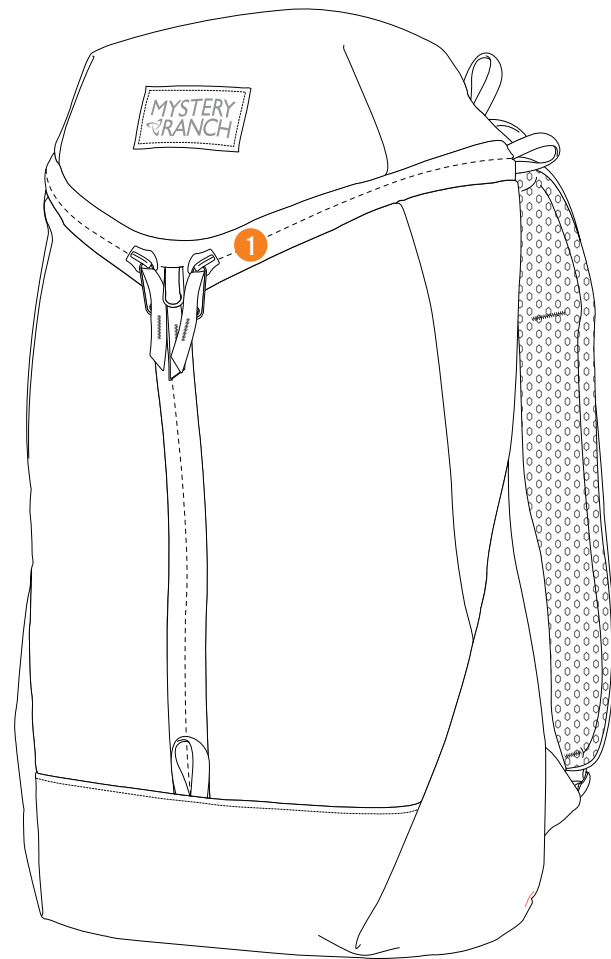
SPECS:

Weight: 1.41 kg (3.1 lbs)
Vol: 27 L (1650 cu-in)
Size: One Size

NEW

CATALYST 18

This super functional pack was made to handle whatever your everyday mission throws at you. With its tough yet environmentally friendly CORDURA® body, it's up for outdoor adventures too.



KEY FEATURES:

- 1 3-ZIP design for rapid access to interior
- Padded laptop pocket with elastic holds laptops up to a 15" in size
- Additional sleeve on the front of the laptop pocket holds a tablet, notebooks, maps, etc.
- Two internal zippered pockets to hold those small-but-important items
- Sustainably made with recycled materials



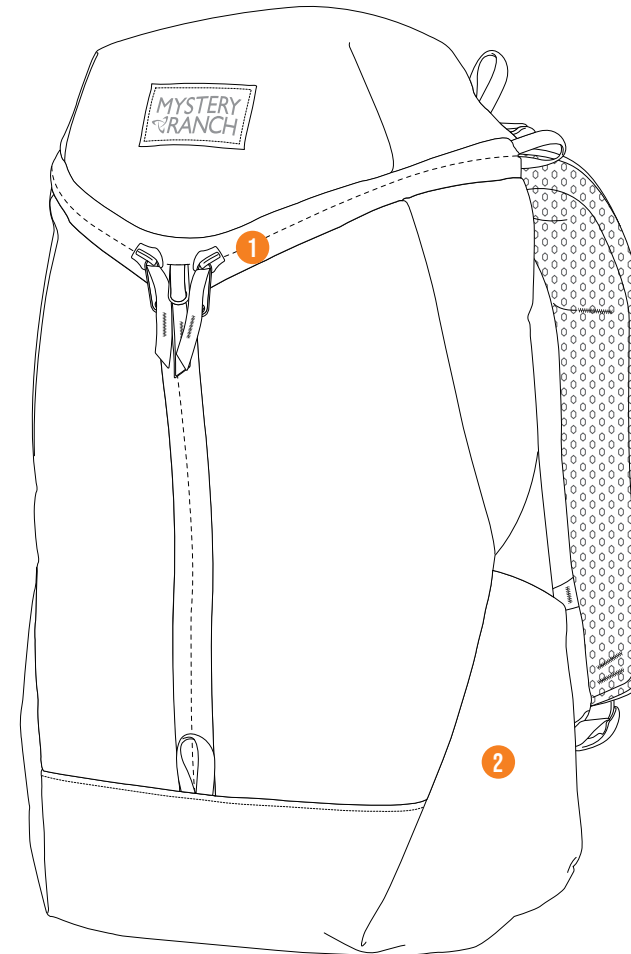
SPECS:

Weight: .8 kg (1.8 lbs)
Vol: 18L (1098 cu-in)
Size: One Size

NEW

CATALYST 22

You don't have to compromise with this tough yet eco-friendly backpack. The CATALYST 22 can be used both in the office and on the trail.



KEY FEATURES:

- 1 3-ZIP design for rapid access to interior
- 2 Two external water bottle pockets, one on each side, fit most bottles
- Additional sleeve on the front of the laptop pocket holds a tablet, notebooks, maps, etc.
- Two internal zippered pockets to hold those small-but-important items
- Padded laptop pocket with elastic holds laptops up to a 16" in size
- Sustainably made with recycled materials



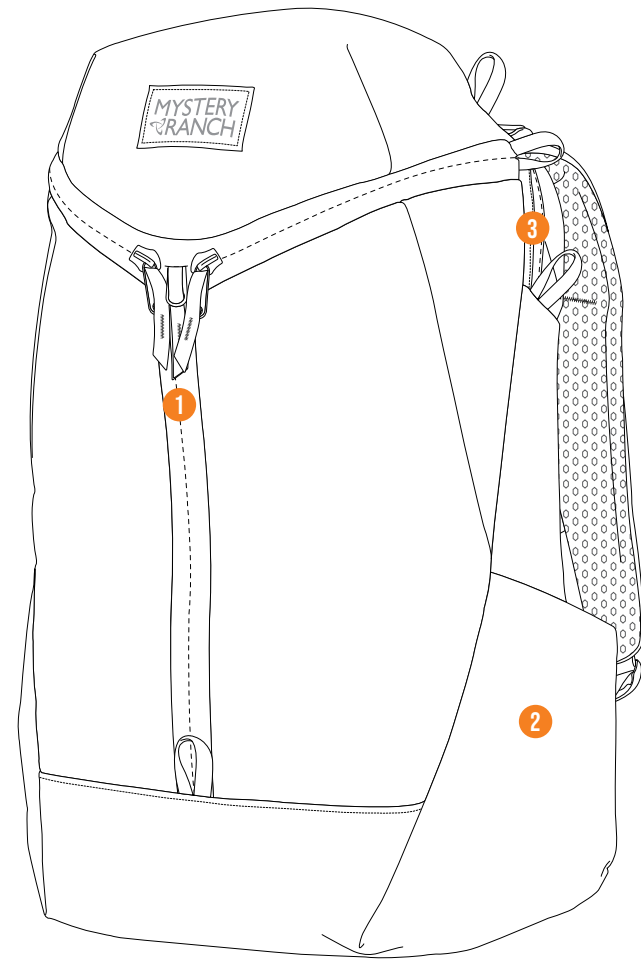
SPECS:

Weight: 1 kg (2.16 lbs)
Vol: 21 L (1280 cu-in)
Size: One Size

NEW

CATALYST 26

A versatile pack built to withstand any urban adventure. With its tough yet environmentally friendly CORDURA® body, it's ready for the outdoors too.



KEY FEATURES:

- 1 3-ZIP design for rapid access to interior
- 2 Two external water bottle pockets, one on each side, fit most bottles
- 3 Dedicated zippered padded laptop pocket with a divider to hold both a laptop (up to 17") and tablet
 - Organizational sleeve on the inside of the bag includes a small, zippered mesh pocket, a dump pocket for a charging cord or water bottle, and two rows of elastic to hold pens, wires, or pocket knives
 - Two internal zippered pockets to hold those small-but-important items
 - Sustainably made with recycled materials



Black Shadow Tiger's Eye Sagebrush

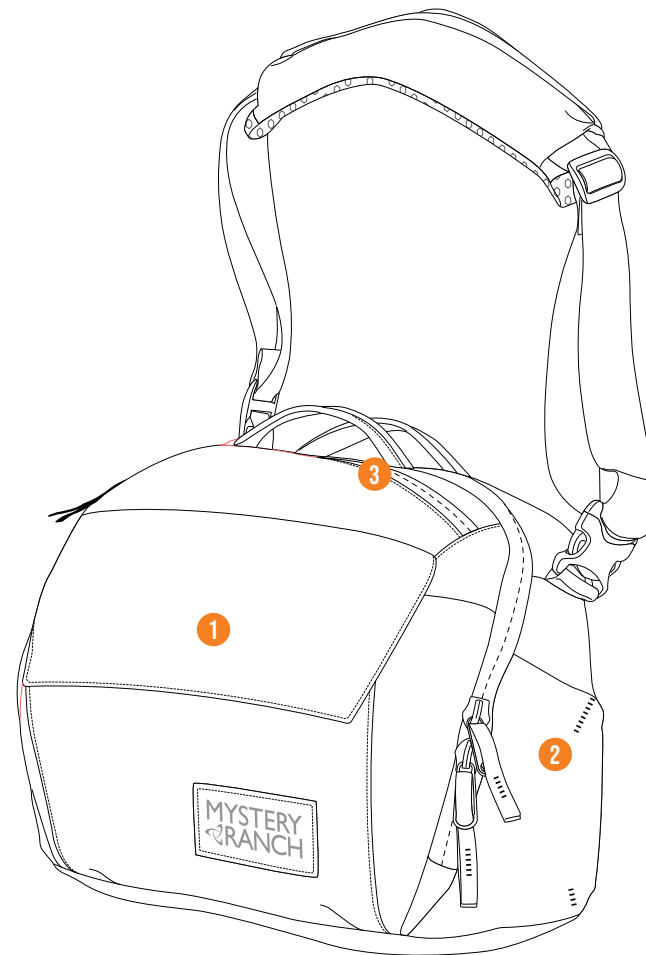
SPECS:

Weight: 1.16 kg (2.56 lbs)
Vol: 25.8 L (1575 cu-in)
Size: One Size

NEW

DISTRICT PRO

Turn your daily commute into an eco-friendly victory lap with the DISTRICT PRO, outfitted with pockets, compartments, and protection to make your urban mission a success.



KEY FEATURES:

- 1 Front pocket with protective flap and two inner detail pockets for small items
- 2 Two external water bottle pockets
- 3 Top zippered pocket with key clip so you don't have misplace or dig for your keys
 - Main part of the bag features a removable divider with a padded laptop sleeve (fits up to a 15" laptop roughly 13"x8.5"), and two large pockets
 - Luggage handle slot on the body panel as well as a zippered pocket on the body panel side for things you want to keep close, passport etc
 - Sustainably made with recycled materials



Black Galaxy Mineral Gray

SPECS:

Weight: 0.94 kg (2.06 lbs)
Vol: 17 L (1035 cu-in)
Size: One Size